

## MATERIAL FILTER

MAXIMUM INLET PRESSURE 6,000 PSI (414 BAR)



READ THIS MANUAL CAREFULLY BEFORE INSTALLING,  
OPERATING OR SERVICING THIS EQUIPMENT.

### THIS MANUAL COVERS THE FOLLOWING MODELS

|  | MODEL        | MATERIAL TYPE | SCREEN MESH SIZE (OPTIONAL) |
|--|--------------|---------------|-----------------------------|
|  | 651755-40-B  | CARBON STEEL  | 93944-40 - 40 MESH          |
|  | 651755-70-B  | CARBON STEEL  | 93944-70 - 70 MESH          |
|  | 651755-100-B | CARBON STEEL  | 93944-100 - 100 MESH        |

### SERVICE KITS

Use only genuine ARO replacement parts to assure compatible pressure rating and longest service life,

Refer to Figure 3 to order replacement parts.

### MATERIAL FILTER DATA

**MODELS** - See Model Description Chart for "-XXX" (Optional Screen)

**MATERIAL** - See Model Description Chart.

**MAXIMUM FLUID PRESSURE** - 6,000 p.s.i.g. (414 bar)

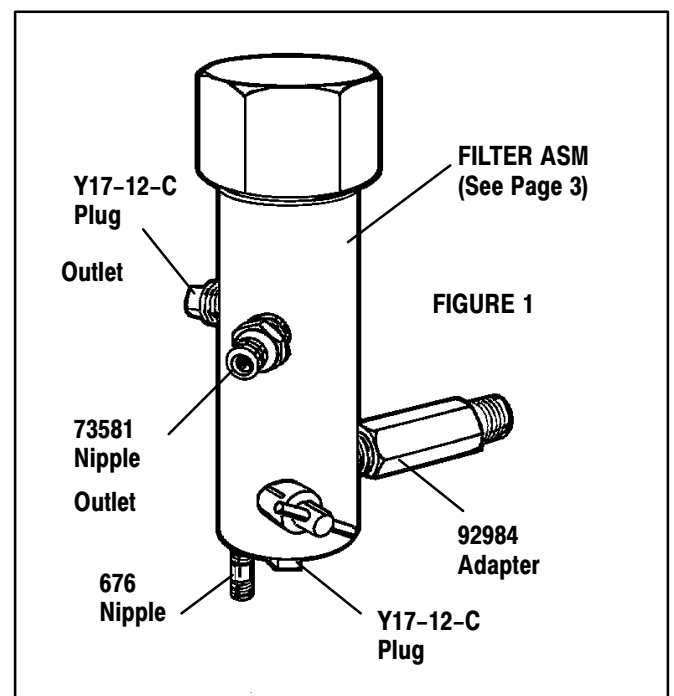
### OPERATING & SAFETY PRECAUTIONS

- ◇ Read and heed all Warnings, Cautions, and Safety Precautions before operating this pump.
- ◇ Use only genuine ARO replacement parts to assure compatible pressure rating and longest service life.

**⚠ WARNING** HAZARDOUS PRESSURE. Can result in serious injury or property damage. Do not service or clean pump, hoses or dispensing valve while the system is pressurized.

**⚠ CAUTION** Be certain all operators of this equipment have been trained for safe working practices, understand it's limitations, and wear safety goggles/equipment when required

**⚠ WARNING** DO NOT EXCEED MAXIMUM INLET AIR PRESSURE AS STATED ON AIR MOTOR MODEL PLATE. OPERATING PUMP AT HIGHER PRESSURE MAY CAUSE PUMP DAMAGE.



**⚠ WARNING** HAZARDOUS MATERIALS. Can cause serious injury or property damage. Do not attempt to return a pump to the factory or service center that contains hazardous material. Safe handling practices must comply with local and national laws and safety code requirements. Obtain Material Safety Data Sheets on all materials from the supplier for proper handling instructions..

### GENERAL DESCRIPTION

The ARO Model Material Filter is used to separate foreign materials, like dirt, stones and sweeping compound, from the material handling section. Material filters and strainers can be installed in a system to combat this

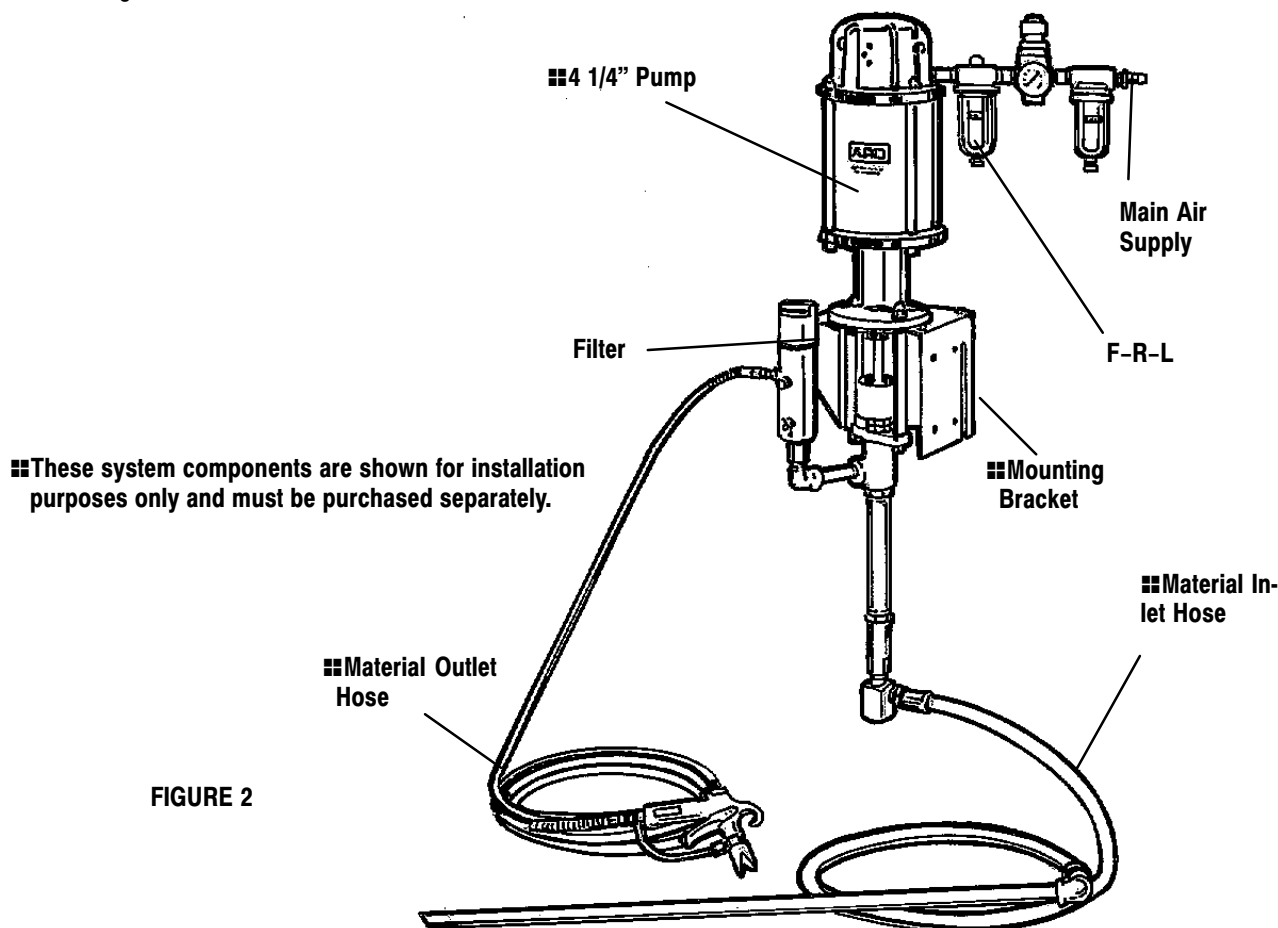
problem thereby achieving longer service life. At the where the fluid enters the material handing section the strainer prevents foreign material from entering the system.

---

## TYPICAL SYSTEM VIEW

---

1. Install material filter either at the inlet of material handling section or upstream from the other accessories (control handle etc.)
2. Refer to typical installation. (Figure 2)
3. The filter unit was tested at the factory with a maximum working pressure of 6,000 PSI. (414 PSI)
4. A Y17-12-C pipe plug is included with this unit to plug the inlet port not being used.



---

## DISASSEMBLY

---

**⚠ WARNING** HAZARDOUS PRESSURE. Can result in serious injury or property damage. Do not service or clean pump, hoses or dispensing valve while the system is pressurized.

- Disconnect air supply line and relieve pressure from the system by opening dispensing valve or device and/or carefully and slowly loosening and removing outlet hose or piping from pump.
1. Unscrew and remove (1) Cap from the (16) Filter body.

2. Remove (2) Gasket from (1) Cap.
3. Remove (3) Spring and (4) Button Guide from the (16) Filter Body.
4. Pull the (6) tube and (5) Ball from the (16) Filter Body.
5. Unscrew the (12) Retainer and remove (13) Washer, (14) "O" Ring, (15) Ball Seat, (11) Gasket and (10) Ball.
6. Unscrew (7) Valve and remove (8) pin and (9) "O" Ring.

Reverse disassembly instructions for reassembly.

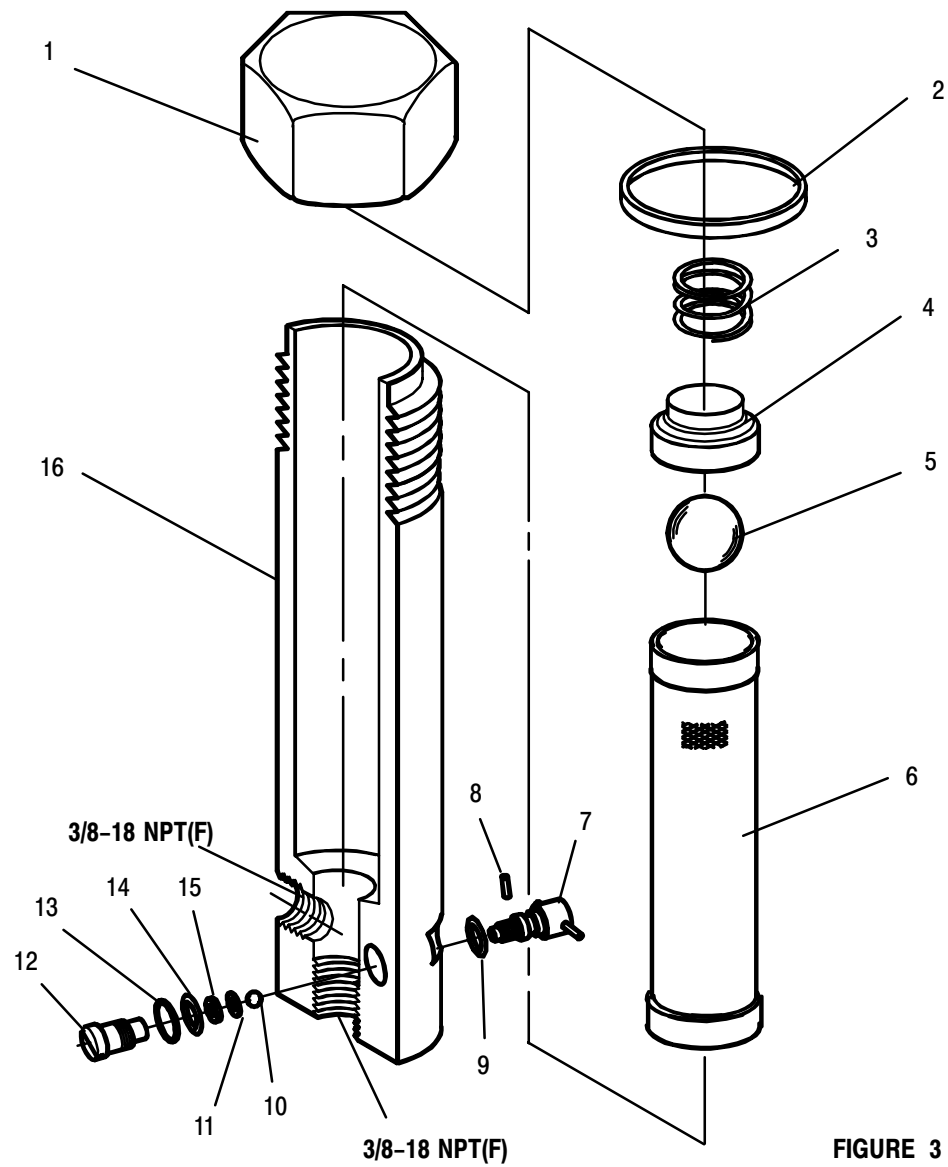


FIGURE 3

| ITEM | DESCRIPTION                   | (QTY) | PART NO.  | ITEM | DESCRIPTION | (QTY) | PART NO. |
|------|-------------------------------|-------|-----------|------|-------------|-------|----------|
| 1    | Cap                           | (1)   | 92990-1   | 9    | "O" Ring    | (1)   | 90404    |
| 2    | Gasket                        | (1)   | 91447     | 10   | Ball        | (1)   | 90963    |
| 3    | Spring                        | (1)   | 90408     | 11   | Gasket      | (1)   | 92476    |
| 4    | Guide Button                  | (1)   | 93949     | 12   | Retainer    | (1)   | 92475    |
| 5    | Ball                          | (1)   | Y16-126   | 13   | Washer      | (1)   | 92900    |
| 6    | Cartridge (See Chart, Page 1) | (1)   | 93944-XXX | 14   | "O" Ring    | (1)   | 92477    |
| 7    | Valve                         | (1)   | 65733     | 15   | Ball Seat   | (1)   | 90961    |
| 8    | Pin                           | (1)   | Y178-216  | 16   | Filter Body | (1)   | 66884    |



Part of worldwide Ingersoll-Rand

PN 97999-010